
BINALONG BUSH POETRY PRIZE + NSW BUSH POETRY CHAMPIONSHIPS BINALONG NSW 12-14TH SEPTEMBER, 2014

Binalong Arts Group Inc. is proud to present the Binalong Bush Poetry Prize, and the New South Wales Bush Poetry Championships, conducted under the auspices of the Australian Bush Poets Association (ABPA). New ABPA requirements state that poets must be a current member of the ABPA. (www.abpa.org.au)

ABOUT THE EVENT

In 2013 Binalong's long and proud poetic history was extended to include the Binalong Banjo Paterson Bush Poetry Prize. Now in 2014 the event has been expanded.

We are delighted to announce that the Binalong Bush Poetry Prize 2014 will offer over \$5,500 in prize money.

The program is designed for maximum enjoyment and to include poets at all ages and stages.

PROGRAM OVERVIEW

The action starts on Friday evening with novice and intermediate poetry competitions then walk-ups—including yarn-spinners.

Saturday and Sunday programs include: Binalong Bush Poetry Prize (BBPP) competitions, non-competitive activities, music and time to relax, chat and explore Binalong.

Saturday night will feature our Celebrate Australia Concert.

Come and enjoy the thrill of competition or sit back and enjoy the open mic sessions.

The walk-ups provide a warm and encouraging space for the non-competitive, the nervous and those prefer to read, as well as a warm-up stage for competitors.

Our aim is to value and encourage traditional Australian culture through poetry, yarns and music. Content for all sections should be about Australian life, its people or history, past or present.

FESTIVAL ENTRY

Three Day Festival pass	\$50/\$40 concession
Saturday Day	\$20/\$15 concession
Saturday Night Celebrate Australia Concert	\$20/\$15 concession
Sunday Day	\$20/\$15 concession
Children 18 and under accompanied by parents	free
Volunteers are eligible for a half-price Three Day Festival pass	
Neither festival entry cost nor poets entry cost includes food.	

B I N A L O N G
BUSH POETRY PRIZE

www.binalongartsgroup.org.au



JUDGES

Our judges for 2014 include:

Graeme Johnson—the Rhymer from Ryde

Robyn Sykes—the Binalong Bard

Gregory North—the Man of Many Hats

PERFORMANCE SECTIONS:

CLASSICAL, MODERN AND ORIGINAL

The NSW Bush Poetry Championships will consist of THREE sections in the Open Performance categories: Classical, Modern and Original.

To be eligible for the overall awards, poets must perform a mixture of serious and humorous poems in these sections. (see entry form for more details)

There is a limit of one entry per person per section with a \$10 entry fee per section. There is a maximum of 20 entrants in each performance section.

There is no entry fee for the two overall awards, the NSW Female and Male Overall Champions (being the Bubbles Garry and Adrian Sykes awards)

INTERMEDIATE AND NOVICE

INTERMEDIATE competitors can enter any or all of the Open Sections listed above (at \$10 per section) and/or the separate Intermediate Section (for \$5).

NOVICE competitors can only enter the Novice Section (for \$5).

Please note juniors have a separate entry form.

THE WRITTEN SECTION

The written section is judged before the event at \$10 per entry (no limit on number of entries).

CONTACT DETAILS

E: info@binalongartsgroup.org.au or robysykespoet@gmail.com

P: Robyn Sykes on 02 6227 4377

P: P.O. Box 100, Binalong NSW 2584

Audience bookings open 1 June 2014

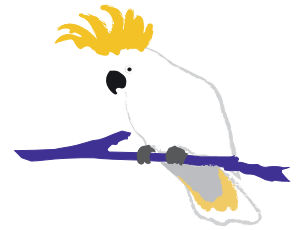
www.trybooking.com/EPKU

CLOSING DATE FOR ENTRIES FRI 1 AUGUST, 2014.

**POST TO: THE COMPETITION CO-ORDINATOR,
PO BOX 100 BINALONG NSW 2584.**

www.binalongartsgroup.org.au

BINALONG BUSH POETRY PRIZE + NSW BUSH POETRY CHAMPIONSHIPS BINALONG NSW 12-14TH SEPTEMBER, 2014



CONDITIONS OF ENTRY

GENERAL AND SECTION INFORMATION

Bush Poetry must have rhyme, rhythm and metre. Because our audiences have a preference for humorous poems, **TWO THIRDS OF THE POEMS PERFORMED IN THIS COMPETITION ARE TO BE HUMOROUS.**

The NSW Bush Poetry Championships will consist of **THREE SECTIONS** in the open categories. **TO BE ELIGIBLE FOR THE OVERALL AWARDS, POETS MUST PERFORM A MIXTURE OF SERIOUS AND HUMOROUS POEMS IN THESE SECTIONS AND BE A MEMBER OF THE ABPA.**

Poems will be allocated on a first in-best choice basis.

Poets may not perform a poem with which they have previously won a first place in the Binalong Bush Poetry Prize. Parodies are ineligible for Open sections, but great for Novice, Intermediate, Poets' Breakfasts and walk-ups.

- **Section 1** BBPP Written: Serious, Humorous and Novice
Max 120 lines. Typed one side A4 only. Two copies of each poem with cover sheet. No name on poems. No limit on number of poems @ \$10 per entry per section.
- **Section 2** BBPP Open Classical: Poem written before and including 1964. Max 8 mins (including preamble).
- **Section 3** BBPP Open Original: Poem (Serious or Humorous) written by the poet (no collaborations). Max 8 mins (including preamble).
- **Section 4** BBPP Open Modern: Poem written since 1964. Copyright must be respected. Max 8 mins (including preamble). Please contact copyright owner for permission to perform.
- **Section 5** Novice Poet: Any poem, original or not. Max 5 mins (including preamble).
- **Section 6** Intermediate Poet: Any poem, original or not. Max 5 mins (incl preamble).
- **Section 7 and 8:** Overall Awards:
'Bubbles Garry' female, 'Adrian Sykes' male.
- **Novices** not eligible for Sections 2 to 4.
- **Intermediates** can enter Open sections and/or Section 6.
- All material performed must be family orientated. Offensive material will not be tolerated and could lead to your removal from the competition section.
- BBPP: Binalong Bush Poetry Prize
ABPA: Australian Bush Poets Association

**CLOSING DATE FOR ENTRIES FRI 1 AUGUST, 2014.
POST TO: THE COMPETITION CO-ORDINATOR,
PO BOX 100 BINALONG NSW 2584.**

(No late entries will be accepted).

ENTRY FEES

- Unsigned/unpaid entries not accepted. We prefer entrants to be a member of the ABPA and/or Poetry Clubs.
- One entry per person per section (sections 2-6) Written section no limit to number of entries per person. Max 120 lines
- Entries accepted in order of date received (limit 20 for Performance sections. We'll refund fees if limit is reached).
- Entry fees \$10 sections 2-4, \$10 ea poem in section 1. Sections 5 and 6: \$5.00.
- Juniors (under 19 at 12 September, 2014) \$2 entry which are not refundable (unless limit is reached)

**CLOSING DATE FOR ENTRIES FRI 1 AUGUST, 2014.
POST TO: THE COMPETITION CO-ORDINATOR,
PO BOX 100 BINALONG NSW 2584.**

(No late entries will be accepted).

JUDGING AND SCORING

- ABPA Judging, Scoring and Rank Order Tally Systems will be used, using ABPA guidelines and scoring sheets current on 12.9.14 (available at abpa.org.au).
- Written judges will not necessarily score all entries, but cull the better ones and judge those out of 100 using current ABPA Written section judging sheets.
- Three judges for performance sections 2-6 using ABPA scoresheets and the Rank Order Tally System current at the time of the event.
- Time limits are upper limits including preamble. Overtime, reading, loss of memory and material deemed offensive will be penalised as per ABPA guidelines.
- Tie breaks: As per current ABPA guidelines for competition.
- The judges' score sheets will be available to collect at the conclusion of the competition on Sunday.
- Reciters can win a category, but the Overall title can only be won by someone who writes as well as recites.
- Only sections 2, 3 and 4 count towards the overall titles sections 7 and 8.

LAST BUT NOT LEAST

- Entrants should be prepared to provide a photo and details for publication if required.
- We reserve right to publish, record or reproduce work submitted (© retained by writer: See entry form declaration)
- Friday night sections (Novice and Intermediate) will be held at the Hotel Binalong.
- All sections Saturday and Sunday activities will be in the Binalong Mechanics Institute (Binalong Hall). All awards on Sunday afternoon.
- We reserve the right to change any detail, including the program. We would only do so if necessary.
- Programs will be available on binalongartsgroup.org.au website.
- Judges and MCs not eligible for prizes except for One Min Poem

ENJOY THE POETRY!